

INTRODUCTION:

Hello. This is the second quarterly report for the 2015-16 year and covers all activity from 1st April – 30th September 2015. Because of a change of data recording systems by some agencies/pharmacies, there are some missing data from this quarter's report but this will be brought up to date via aggregated totals in the report for Q3 when that's published.

The 2014/15 annual report is currently being finalised and will be published in December. This report will details all IMS client activity recorded during 2014/15 across Cheshire and Merseyside, and cross matches activity recorded in IMS with client numbers from the National Drug Treatment monitoring System (NDTMS) and the Drug Intervention Programme (DIP).










IMS has featured in the programme "Improve and Protect" produced by the Royal Society for Public Health (RSPH). A section of the programme featured the monitoring systems provided by the Centre for Public health and focused on IMS. The full programme and further details about RSPH can be found here: www.rsph.org.uk/improveandprotect

We have recently added two new modules to IMS these now allow you to record information relating to NPS (novel psychoactive substances) or 'legal highs' and to record 'Take home Naloxone kits' that are issued to clients. Further information on both these modules is available on our website: www.cph.org.uk/ims/imsdataset

IMS has been shortlisted as a finalist in the 'Best example of advancing local NHS systems for innovation' category at the 2015 North West Coast Research and Innovation Awards. More details here: www.nwcawards.co.uk

Thanks as always for your commitment to IMS.

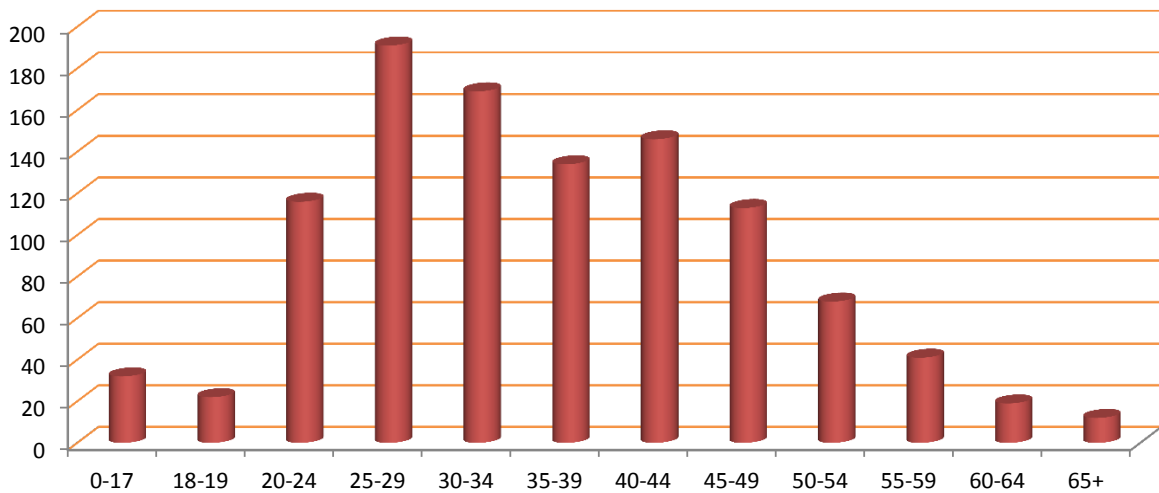
ACTIVITY SUMMARY FOR: WIRRAL

<p>Number of individuals who accessed non-structured interventions this quarter (and year to date).</p>	<p>639 (1,063)</p>  <p>All Individuals</p>	<p>531 (911)</p>  <p>Men</p>	<p>95 (152)</p>  <p>Women</p>
	<p>1,450 (1,450)</p>  <p>Brief Interventions</p>	<p>72 (72)</p>  <p>Onward Referrals</p>	<p>652 (652)</p>  <p>Syringe Exchange Transactions</p>
	<p>56 (56)</p>  <p>Wellbeing / Review</p>	<p>*** (***)</p>  <p>Health Screening</p>	<p>252 (252)</p>  <p>Syringe Exchange Returns</p>

AGE GROUPS:

Total individuals for the current year to date, shown by age group.

IMS	0-17	18-19	20-24	25-29	30-34	35-39	40-44	45-49	50-54	55-59	60-64	65+
WIR10019	31	***	0	0	0	0	0	0	0	0	0	0
WIR10049	0	6	17	12	8	6	10	14	***	9	***	0
WIR10055	0	6	11	15	24	34	35	39	28	16	***	***
WIR10059	0	***	***	12	13	17	18	8	11	8	5	9
WIR30057	***	7	78	143	122	69	84	51	25	8	***	0
WIR30058	0	***	8	14	6	13	***	5	***	***	7	***
WIR40076	0	0	0	0	0	0	0	0	0	0	0	0
WIR40077	0	0	0	0	0	0	0	0	0	0	0	0
WIR40079	0	0	0	0	0	0	0	0	0	0	0	0
WIR40080	0	0	0	0	0	0	0	0	0	0	0	0
WIR40081	0	0	0	0	0	0	0	0	0	0	0	0
WIR40087	0	0	0	0	0	0	0	0	0	0	0	0
WIR40088	0	0	0	0	0	0	0	0	0	0	0	0
WIR40090	0	0	0	0	0	0	0	0	0	0	0	0
WIR40097	0	0	0	0	0	0	0	0	0	0	0	0
WIR40105	0	0	0	0	0	0	0	0	0	0	0	0
WIR40106	0	0	0	0	0	0	0	0	0	0	0	0
WIR40108	0	0	0	0	0	0	0	0	0	0	0	0
WIR40135	0	0	0	0	0	0	0	0	0	0	0	0
WIR40149	0	0	0	0	0	0	0	0	0	0	0	0
WIR40150	0	0	0	0	0	0	0	0	0	0	0	0
WIR40153	0	0	0	0	0	0	0	0	0	0	0	0
-	-	-	-	-	-	-	-	-	-	-	-	-
-	-	-	-	-	-	-	-	-	-	-	-	-
-	-	-	-	-	-	-	-	-	-	-	-	-
-	-	-	-	-	-	-	-	-	-	-	-	-
-	-	-	-	-	-	-	-	-	-	-	-	-
-	-	-	-	-	-	-	-	-	-	-	-	-
-	-	-	-	-	-	-	-	-	-	-	-	-
-	-	-	-	-	-	-	-	-	-	-	-	-
-	-	-	-	-	-	-	-	-	-	-	-	-
-	-	-	-	-	-	-	-	-	-	-	-	-
Wirral	32	22	116	191	169	134	146	113	68	41	19	12



ACTIVITY SUMMARY: BY AGENCY

Total activity by type delivered by each agency quarterly and as a total for the current year to date.

Agency	Interventions					Referrals					Syringe Exchange Transactions				
	Qtr1	Qtr2	Qtr3	Qtr4	YTD	Qtr1	Qtr2	Qtr3	Qtr4	YTD	Qtr1	Qtr2	Qtr3	Qtr4	YTD
WIR10019	***	-	-	-	***	0	-	-	-	0	0	-	-	-	0
WIR10049	82	-	-	-	82	57	-	-	-	57	0	-	-	-	0
WIR10055	117	-	-	-	117	0	-	-	-	0	0	-	-	-	0
WIR10059	43	-	-	-	43	0	-	-	-	0	0	-	-	-	0
WIR30057	1,206	-	-	-	1,206	15	-	-	-	15	565	-	-	-	565
WIR30058	***	-	-	-	***	0	-	-	-	0	87	-	-	-	87
WIR40076	0	-	-	-	0	0	-	-	-	0	0	-	-	-	0
WIR40077	0	-	-	-	0	0	-	-	-	0	0	-	-	-	0
WIR40079	0	-	-	-	0	0	-	-	-	0	0	-	-	-	0
WIR40080	0	-	-	-	0	0	-	-	-	0	0	-	-	-	0
WIR40081	0	-	-	-	0	0	-	-	-	0	0	-	-	-	0
WIR40087	0	-	-	-	0	0	-	-	-	0	0	-	-	-	0
WIR40088	0	-	-	-	0	0	-	-	-	0	0	-	-	-	0
WIR40090	0	-	-	-	0	0	-	-	-	0	0	-	-	-	0
WIR40097	0	-	-	-	0	0	-	-	-	0	0	-	-	-	0
WIR40105	0	-	-	-	0	0	-	-	-	0	0	-	-	-	0
WIR40106	0	-	-	-	0	0	-	-	-	0	0	-	-	-	0
WIR40108	0	-	-	-	0	0	-	-	-	0	0	-	-	-	0
WIR40135	0	-	-	-	0	0	-	-	-	0	0	-	-	-	0
WIR40149	0	-	-	-	0	0	-	-	-	0	0	-	-	-	0
WIR40150	0	-	-	-	0	0	-	-	-	0	0	-	-	-	0
WIR40153	0	-	-	-	0	0	-	-	-	0	0	-	-	-	0
	0	-	-	-	-	-	-	-	-	-	-	-	-	-	-
	-	-	-	-	-	-	-	-	-	-	-	-	-	-	-
	-	-	-	-	-	-	-	-	-	-	-	-	-	-	-
	-	-	-	-	-	-	-	-	-	-	-	-	-	-	-
	-	-	-	-	-	-	-	-	-	-	-	-	-	-	-
	-	-	-	-	-	-	-	-	-	-	-	-	-	-	-
	-	-	-	-	-	-	-	-	-	-	-	-	-	-	-
	-	-	-	-	-	-	-	-	-	-	-	-	-	-	-
	-	-	-	-	-	-	-	-	-	-	-	-	-	-	-
WIR	1,450	0	0	0	1,450	72	0	0	0	72	652	0	0	0	652

Agency	Wellbeing/Reviews					Health Screenings					Syringe Exchange Returns				
	Qtr1	Qtr2	Qtr3	Qtr4	YTD	Qtr1	Qtr2	Qtr3	Qtr4	YTD	Qtr1	Qtr2	Qtr3	Qtr4	YTD
WIR10019	0	-	-	-	0	0	-	-	-	0	0	-	-	-	0
WIR10049	46	-	-	-	46	0	-	-	-	0	0	-	-	-	0
WIR10055	0	-	-	-	0	0	-	-	-	0	0	-	-	-	0
WIR10059	10	-	-	-	10	0	-	-	-	0	0	-	-	-	0
WIR30057	0	-	-	-	0	***	-	-	-	***	225	-	-	-	225
WIR30058	0	-	-	-	0	0	-	-	-	0	27	-	-	-	27
WIR40076	0	-	-	-	0	0	-	-	-	0	0	-	-	-	0
WIR40077	0	-	-	-	0	0	-	-	-	0	0	-	-	-	0
WIR40079	0	-	-	-	0	0	-	-	-	0	0	-	-	-	0
WIR40080	0	-	-	-	0	0	-	-	-	0	0	-	-	-	0
WIR40081	0	-	-	-	0	0	-	-	-	0	0	-	-	-	0
WIR40087	0	-	-	-	0	0	-	-	-	0	0	-	-	-	0
WIR40088	0	-	-	-	0	0	-	-	-	0	0	-	-	-	0
WIR40090	0	-	-	-	0	0	-	-	-	0	0	-	-	-	0
WIR40097	0	-	-	-	0	0	-	-	-	0	0	-	-	-	0
WIR40105	0	-	-	-	0	0	-	-	-	0	0	-	-	-	0
WIR40106	0	-	-	-	0	0	-	-	-	0	0	-	-	-	0
WIR40108	0	-	-	-	0	0	-	-	-	0	0	-	-	-	0
WIR40135	0	-	-	-	0	0	-	-	-	0	0	-	-	-	0
WIR40149	0	-	-	-	0	0	-	-	-	0	0	-	-	-	0
WIR40150	0	-	-	-	0	0	-	-	-	0	0	-	-	-	0
WIR40153	0	-	-	-	0	0	-	-	-	0	0	-	-	-	0
	-	-	-	-	-	-	-	-	-	-	-	-	-	-	-
	-	-	-	-	-	-	-	-	-	-	-	-	-	-	-
	-	-	-	-	-	-	-	-	-	-	-	-	-	-	-
	-	-	-	-	-	-	-	-	-	-	-	-	-	-	-
	-	-	-	-	-	-	-	-	-	-	-	-	-	-	-
	-	-	-	-	-	-	-	-	-	-	-	-	-	-	-
	-	-	-	-	-	-	-	-	-	-	-	-	-	-	-
	-	-	-	-	-	-	-	-	-	-	-	-	-	-	-
	-	-	-	-	-	-	-	-	-	-	-	-	-	-	-
WIR	56	0	0	0	56	***	0	0	0	***	252	0	0	0	252

CLIENT REVIEW DATA: BY AGENCY

PRIMARY SUBSTANCE:

IMS	Alcohol	Amphetamines (excl Ecstasy)	Cannabis	Cocaine (excl Crack)	Crack Cocaine	Heroin	Methadone	Steroids & PIEDS	Others	Not Stated
WIR10019	10	0	20	0	0	0	0	0	***	***
WIR10049	41	***	21	5	5	5	***	0	***	5
WIR10055	78	***	9	7	***	0	0	0	25	88
WIR10059	63	***	12	10	5	0	0	0	0	15
WIR30057	***	6	0	***	0	59	12	436	***	74
WIR30058	0	0	0	0	0	***	0	12	0	48
WIR40076	0	0	0	0	0	0	0	0	0	0
WIR40077	0	0	0	0	0	0	0	0	0	0
WIR40079	0	0	0	0	0	0	0	0	0	0
WIR40080	0	0	0	0	0	0	0	0	0	0
WIR40081	0	0	0	0	0	0	0	0	0	0
WIR40087	0	0	0	0	0	0	0	0	0	0
WIR40088	0	0	0	0	0	0	0	0	0	0
WIR40090	0	0	0	0	0	0	0	0	0	0
WIR40097	0	0	0	0	0	0	0	0	0	0
WIR40105	0	0	0	0	0	0	0	0	0	0
WIR40106	0	0	0	0	0	0	0	0	0	0
WIR40108	0	0	0	0	0	0	0	0	0	0
WIR40135	0	0	0	0	0	0	0	0	0	0
WIR40149	0	0	0	0	0	0	0	0	0	0
WIR40150	0	0	0	0	0	0	0	0	0	0
WIR40153	0	0	0	0	0	0	0	0	0	0
	-	-	-	-	-	-	-	-	-	-
	-	-	-	-	-	-	-	-	-	-
	-	-	-	-	-	-	-	-	-	-
	-	-	-	-	-	-	-	-	-	-
	-	-	-	-	-	-	-	-	-	-
	-	-	-	-	-	-	-	-	-	-
	-	-	-	-	-	-	-	-	-	-
	-	-	-	-	-	-	-	-	-	-
	-	-	-	-	-	-	-	-	-	-
Wirral	184	12	61	20	13	66	14	448	30	215

ADDITIONAL NOTES

The figure for those accessing services includes all individuals who had an intervention, an onward referral, a well being review, a health screening, or a syringe exchange transaction during the quarter.

The number of individuals shown Year to Date (YTD) is not necessarily a sum of the quarterly figures as the same individual may have presented in more than one quarter, but they will only be counted once in the YTD number. Likewise the Local Authority total is less than a sum of the agency figures where an individual has presented at multiple services during the period.

The activity summary shows the number of activities delivered by each service.

The Year to Date (YTD) activity figure is cumulative and should represent the sum of each quarterly figure, unless any retrospective changes are made to the data by the agency following their quarterly data submission.

The client review data section includes all clients who have accessed services at any time during the current year to date, and details information that is collected in the client assessment review, such as Primary Substance of use, Accommodation status, Employment Status, and Parental status.

Where the client has multiple assessments completed, only the last completed assessment has been used.

Report prepared by the CPH Monitoring Team,
Centre for Public Health, Liverpool John Moores University,
Henry Cotton Building, 15-21 Webster Street, Liverpool,
L3 2ET. Tel: (0151) 231 4314.
www.cph.org.uk/ims
www.twitter.com/cph_ims

