

INTRODUCTION:










Hello everyone. This is the first report of the new 2015-16 financial year and covers all activity from 1st April – 30th June 2015. Because of a change of data recording systems by some agencies/pharmacies, there are some missing data from this quarter's report but this will be brought up to date via aggregated totals in the report for Q2 when that's published.

Thank you to everyone who attended our recent IMS user group meeting. It was really good to hear about your experiences of using IMS. In response to your feedback, we've already updated the IMS assessments screen so you can now record "0" (zero) drinking days, drinking units, AUDIT score, and number of children: of course if the client is not asked or refuses to answer, then this item should still be left blank. We are currently working on IMS to introduce more features as a result of your suggestions and some of these will be rolled out over coming months.

We are currently working on our 2014/15 annual report which following feedback from commissioners will for the first time include analysis of client outcomes, so as always it's important that you continue to complete the client assessments screen as fully as possible, and enter your client wellbeing reviews at least once every six months.

Since the start of quarter 1 we've had another three services begin using IMS online, and in addition another three local authority areas have started using electronic data reporting for Pharmacy needle exchanges, so you may notice additional services appearing on this quarterly report as the year rolls on. Thanks as always for your commitment to IMS which continues to go from strength to strength and reflect the good work that goes on within your services.

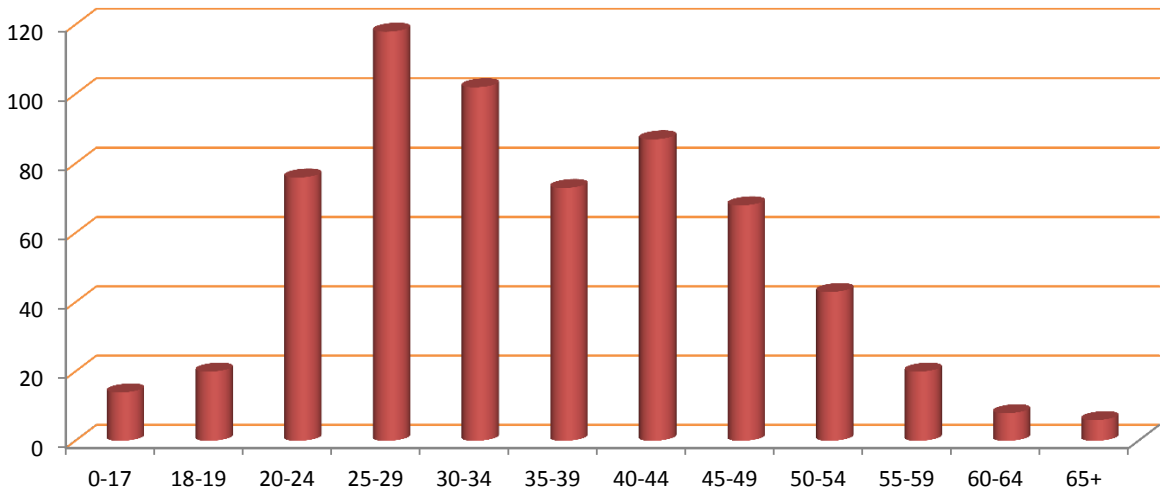
ACTIVITY SUMMARY FOR: WIRRAL

<p>Number of individuals who accessed non-structured interventions this quarter (and year to date).</p>	<p>635 (635)</p>  <p>All Individuals</p>	<p>547 (547)</p>  <p>Men</p>	<p>88 (88)</p>  <p>Women</p>
	<p>1,450 (1,450)</p>  <p>Brief Interventions</p>	<p>72 (72)</p>  <p>Onward Referrals</p>	<p>652 (652)</p>  <p>Syringe Exchange Transactions</p>
	<p>56 (56)</p>  <p>Wellbeing / Review</p>	<p>*** (***)</p>  <p>Health Screening</p>	<p>252 (252)</p>  <p>Syringe Exchange Returns</p>

AGE GROUPS:

Total individuals for the current year to date, shown by age group.

IMS	0-17	18-19	20-24	25-29	30-34	35-39	40-44	45-49	50-54	55-59	60-64	65+
WIR10019	14	***	0	0	0	0	0	0	0	0	0	0
WIR10049	0	5	12	6	***	6	6	6	***	6	0	0
WIR10055	0	***	8	6	19	14	22	21	15	7	***	***
WIR10059	0	***	0	***	5	8	8	***	6	***	***	***
WIR30057	0	9	52	94	70	39	48	36	19	***	***	0
WIR30058	0	***	5	9	5	8	5	***	***	***	***	***
WIR40076	-	-	-	-	-	-	-	-	-	-	-	-
WIR40077	-	-	-	-	-	-	-	-	-	-	-	-
WIR40079	-	-	-	-	-	-	-	-	-	-	-	-
WIR40080	-	-	-	-	-	-	-	-	-	-	-	-
WIR40081	-	-	-	-	-	-	-	-	-	-	-	-
WIR40087	-	-	-	-	-	-	-	-	-	-	-	-
WIR40088	-	-	-	-	-	-	-	-	-	-	-	-
WIR40090	-	-	-	-	-	-	-	-	-	-	-	-
WIR40097	-	-	-	-	-	-	-	-	-	-	-	-
WIR40105	-	-	-	-	-	-	-	-	-	-	-	-
WIR40106	-	-	-	-	-	-	-	-	-	-	-	-
WIR40108	-	-	-	-	-	-	-	-	-	-	-	-
WIR40135	-	-	-	-	-	-	-	-	-	-	-	-
WIR40149	-	-	-	-	-	-	-	-	-	-	-	-
WIR40150	-	-	-	-	-	-	-	-	-	-	-	-
WIR40153	-	-	-	-	-	-	-	-	-	-	-	-
	-	-	-	-	-	-	-	-	-	-	-	-
	-	-	-	-	-	-	-	-	-	-	-	-
	-	-	-	-	-	-	-	-	-	-	-	-
	-	-	-	-	-	-	-	-	-	-	-	-
	-	-	-	-	-	-	-	-	-	-	-	-
	-	-	-	-	-	-	-	-	-	-	-	-
	-	-	-	-	-	-	-	-	-	-	-	-
	-	-	-	-	-	-	-	-	-	-	-	-
	-	-	-	-	-	-	-	-	-	-	-	-
	-	-	-	-	-	-	-	-	-	-	-	-
Wirral	14	20	76	118	102	73	87	68	43	20	8	6



ACTIVITY SUMMARY: BY AGENCY

Total activity by type delivered by each agency quarterly and as a total for the current year to date.

Agency	Interventions					Referrals					Syringe Exchange Transactions				
	Qtr1	Qtr2	Qtr3	Qtr4	YTD	Qtr1	Qtr2	Qtr3	Qtr4	YTD	Qtr1	Qtr2	Qtr3	Qtr4	YTD
WIR10019	***	-	-	-	***	0	-	-	-	0	0	-	-	-	0
WIR10049	82	-	-	-	82	57	-	-	-	57	0	-	-	-	0
WIR10055	117	-	-	-	117	0	-	-	-	0	0	-	-	-	0
WIR10059	43	-	-	-	43	0	-	-	-	0	0	-	-	-	0
WIR30057	1,206	-	-	-	1,206	15	-	-	-	15	565	-	-	-	565
WIR30058	***	-	-	-	***	0	-	-	-	0	87	-	-	-	87
WIR40076	0	-	-	-	0	0	-	-	-	0	0	-	-	-	0
WIR40077	0	-	-	-	0	0	-	-	-	0	0	-	-	-	0
WIR40079	0	-	-	-	0	0	-	-	-	0	0	-	-	-	0
WIR40080	0	-	-	-	0	0	-	-	-	0	0	-	-	-	0
WIR40081	0	-	-	-	0	0	-	-	-	0	0	-	-	-	0
WIR40087	0	-	-	-	0	0	-	-	-	0	0	-	-	-	0
WIR40088	0	-	-	-	0	0	-	-	-	0	0	-	-	-	0
WIR40090	0	-	-	-	0	0	-	-	-	0	0	-	-	-	0
WIR40097	0	-	-	-	0	0	-	-	-	0	0	-	-	-	0
WIR40105	0	-	-	-	0	0	-	-	-	0	0	-	-	-	0
WIR40106	0	-	-	-	0	0	-	-	-	0	0	-	-	-	0
WIR40108	0	-	-	-	0	0	-	-	-	0	0	-	-	-	0
WIR40135	0	-	-	-	0	0	-	-	-	0	0	-	-	-	0
WIR40149	0	-	-	-	0	0	-	-	-	0	0	-	-	-	0
WIR40150	0	-	-	-	0	0	-	-	-	0	0	-	-	-	0
WIR40153	0	-	-	-	0	0	-	-	-	0	0	-	-	-	0
	0	-	-	-	-	-	-	-	-	-	-	-	-	-	-
	-	-	-	-	-	-	-	-	-	-	-	-	-	-	-
	-	-	-	-	-	-	-	-	-	-	-	-	-	-	-
	-	-	-	-	-	-	-	-	-	-	-	-	-	-	-
	-	-	-	-	-	-	-	-	-	-	-	-	-	-	-
	-	-	-	-	-	-	-	-	-	-	-	-	-	-	-
	-	-	-	-	-	-	-	-	-	-	-	-	-	-	-
	-	-	-	-	-	-	-	-	-	-	-	-	-	-	-
	-	-	-	-	-	-	-	-	-	-	-	-	-	-	-
WIR	1,450	0	0	0	1,450	72	0	0	0	72	652	0	0	0	652

Agency	Wellbeing/Reviews					Health Screenings					Syringe Exchange Returns				
	Qtr1	Qtr2	Qtr3	Qtr4	YTD	Qtr1	Qtr2	Qtr3	Qtr4	YTD	Qtr1	Qtr2	Qtr3	Qtr4	YTD
WIR10019	0	-	-	-	0	0	-	-	-	0	0	-	-	-	0
WIR10049	46	-	-	-	46	0	-	-	-	0	0	-	-	-	0
WIR10055	0	-	-	-	0	0	-	-	-	0	0	-	-	-	0
WIR10059	10	-	-	-	10	0	-	-	-	0	0	-	-	-	0
WIR30057	0	-	-	-	0	***	-	-	-	***	225	-	-	-	225
WIR30058	0	-	-	-	0	0	-	-	-	0	27	-	-	-	27
WIR40076	0	-	-	-	0	0	-	-	-	0	0	-	-	-	0
WIR40077	0	-	-	-	0	0	-	-	-	0	0	-	-	-	0
WIR40079	0	-	-	-	0	0	-	-	-	0	0	-	-	-	0
WIR40080	0	-	-	-	0	0	-	-	-	0	0	-	-	-	0
WIR40081	0	-	-	-	0	0	-	-	-	0	0	-	-	-	0
WIR40087	0	-	-	-	0	0	-	-	-	0	0	-	-	-	0
WIR40088	0	-	-	-	0	0	-	-	-	0	0	-	-	-	0
WIR40090	0	-	-	-	0	0	-	-	-	0	0	-	-	-	0
WIR40097	0	-	-	-	0	0	-	-	-	0	0	-	-	-	0
WIR40105	0	-	-	-	0	0	-	-	-	0	0	-	-	-	0
WIR40106	0	-	-	-	0	0	-	-	-	0	0	-	-	-	0
WIR40108	0	-	-	-	0	0	-	-	-	0	0	-	-	-	0
WIR40135	0	-	-	-	0	0	-	-	-	0	0	-	-	-	0
WIR40149	0	-	-	-	0	0	-	-	-	0	0	-	-	-	0
WIR40150	0	-	-	-	0	0	-	-	-	0	0	-	-	-	0
WIR40153	0	-	-	-	0	0	-	-	-	0	0	-	-	-	0
	-	-	-	-	-	-	-	-	-	-	-	-	-	-	-
	-	-	-	-	-	-	-	-	-	-	-	-	-	-	-
	-	-	-	-	-	-	-	-	-	-	-	-	-	-	-
	-	-	-	-	-	-	-	-	-	-	-	-	-	-	-
	-	-	-	-	-	-	-	-	-	-	-	-	-	-	-
	-	-	-	-	-	-	-	-	-	-	-	-	-	-	-
	-	-	-	-	-	-	-	-	-	-	-	-	-	-	-
	-	-	-	-	-	-	-	-	-	-	-	-	-	-	-
	-	-	-	-	-	-	-	-	-	-	-	-	-	-	-
WIR	56	0	0	0	56	***	0	0	0	***	252	0	0	0	252

CLIENT REVIEW DATA: BY AGENCY

PRIMARY SUBSTANCE:

IMS	Alcohol	Amphetamines (excl Ecstasy)	Cannabis	Cocaine (excl Crack)	Crack Cocaine	Heroin	Methadone	Steroids & PIEDS	Others	Not Stated
WIR10019	15	0	***	0	0	0	0	0	0	0
WIR10049	25	***	14	***	***	***	***	0	***	***
WIR10055	36	***	***	6	0	0	0	0	21	49
WIR10059	34	***	***	***	***	0	0	0	0	0
WIR30057	0	5	0	0	0	37	6	266	***	57
WIR30058	0	0	0	0	0	***	0	11	0	29
WIR40076	-	-	-	-	-	-	-	-	-	-
WIR40077	-	-	-	-	-	-	-	-	-	-
WIR40079	-	-	-	-	-	-	-	-	-	-
WIR40080	-	-	-	-	-	-	-	-	-	-
WIR40081	-	-	-	-	-	-	-	-	-	-
WIR40087	-	-	-	-	-	-	-	-	-	-
WIR40088	-	-	-	-	-	-	-	-	-	-
WIR40090	-	-	-	-	-	-	-	-	-	-
WIR40097	-	-	-	-	-	-	-	-	-	-
WIR40105	-	-	-	-	-	-	-	-	-	-
WIR40106	-	-	-	-	-	-	-	-	-	-
WIR40108	-	-	-	-	-	-	-	-	-	-
WIR40135	-	-	-	-	-	-	-	-	-	-
WIR40149	-	-	-	-	-	-	-	-	-	-
WIR40150	-	-	-	-	-	-	-	-	-	-
WIR40153	-	-	-	-	-	-	-	-	-	-
-	-	-	-	-	-	-	-	-	-	-
-	-	-	-	-	-	-	-	-	-	-
-	-	-	-	-	-	-	-	-	-	-
-	-	-	-	-	-	-	-	-	-	-
-	-	-	-	-	-	-	-	-	-	-
-	-	-	-	-	-	-	-	-	-	-
-	-	-	-	-	-	-	-	-	-	-
-	-	-	-	-	-	-	-	-	-	-
-	-	-	-	-	-	-	-	-	-	-
-	-	-	-	-	-	-	-	-	-	-
Wirral	110	8	22	12	***	42	7	277	24	131

ADDITIONAL NOTES

The figure for those accessing services includes all individuals who had an intervention, an onward referral, a well being review, a health screening, or a syringe exchange transaction during the quarter.

The number of individuals shown Year to Date (YTD) is not necessarily a sum of the quarterly figures as the same individual may have presented in more than one quarter, but they will only be counted once in the YTD number. Likewise the Local Authority total is less than a sum of the agency figures where an individual has presented at multiple services during the period.

The activity summary shows the number of activities delivered by each service.

The Year to Date (YTD) activity figure is cumulative and should represent the sum of each quarterly figure, unless any retrospective changes are made to the data by the agency following their quarterly data submission.

The client review data section includes all clients who have accessed services at any time during the current year to date, and details information that is collected in the client assessment review, such as Primary Substance of use, Accommodation status, Employment Status, and Parental status.

Where the client has multiple assessments completed, only the last completed assessment has been used.

Report prepared by the CPH Monitoring Team,
Centre for Public Health, Liverpool John Moores University,
Henry Cotton Building, 15-21 Webster Street, Liverpool,
L3 2ET. Tel: (0151) 231 4314.
www.cph.org.uk/ims
www.twitter.com/cph_ims

