

Reducing deaths and NFO

9th December 2022

Dr Katy Knight

Associate Medical Director



withyou

Key clinical priorities

- ❖ Fast track prescribing for new opiate referrals
- ❖ Supporting clients to remain on OST
- ❖ Developing our outreach model
- ❖ Increasing the number of clients on buvidal
- ❖ Developing our MDTs to discuss clients weekly who are at high risk to DRD/NFO
- ❖ Adapting our health and wellbeing assessments to identify the early stages of disease – including cancers to improve prognosis and reduce preventable deaths
- ❖ Fast dose optimisation for prison releases



Prescribing priorities:

Fast track prescribing – aim review all new opiate clients and start OST within two working days of presentation.

Supporting clients to remain on OST – continue to run a weekly restart clinic from all ARCs.

Fast dose optimisation – dedicated appointments for prison releases.

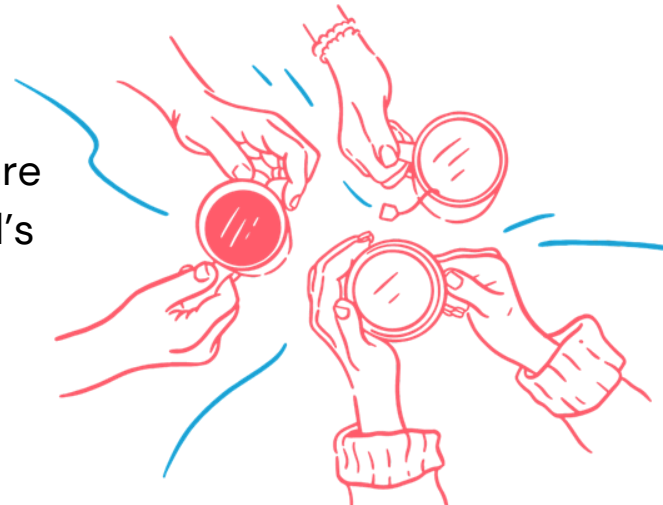
Buvidal – 27 clients are currently on Buvidal – many of which are or previously were at high risk of DRD. With You have applied for a home office licence to allow us to quick start buvidal from heroin for our high risk cohort.



MDT

With You recognises that certain client groups are at higher risk of DRD and NFO.

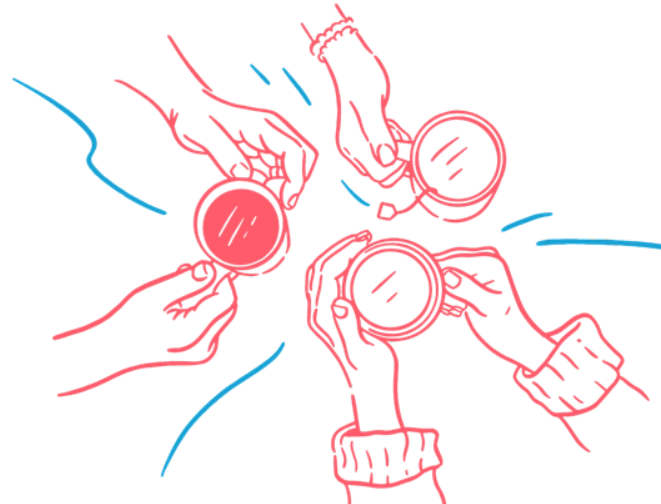
- With You have developed an internal high risk of DRD register. Clients are discussed weekly in our clinical MDT meetings. Action plans are agreed to reduce risk and outreach workers are utilised to re engage clients and deliver naloxone if required
- Working with our partners including PHE and MerseyCare to develop a high risk of DRD panel similar to Blackpool's model



Developing our Outreach model

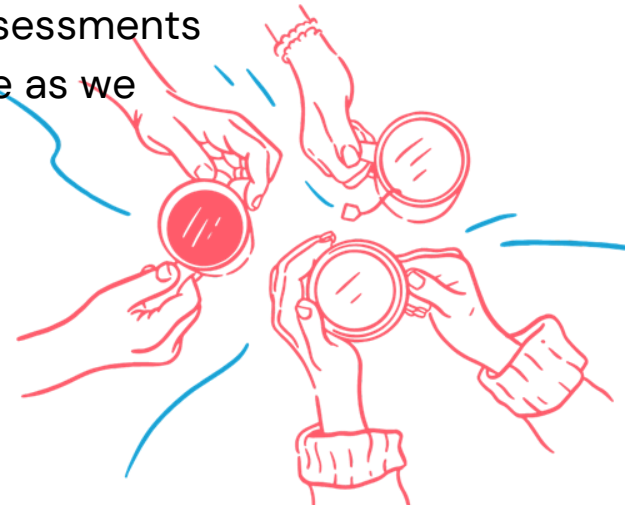
With You Liverpool currently have three prescribing outreach clinics:

- Sex worker clinic off Sheil Road
- Homeless clinic in the Whitechapel Centre
- Homeless clinic in collaboration with Brownlow and Merseycare in the HAC



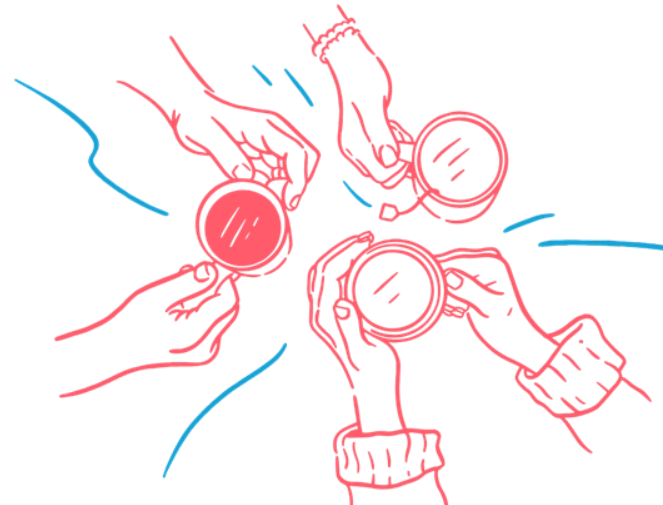
Physical health

Late presentation of cancers and other diseases – the pandemic has seen an increase in late presentations for cancer. With You have modified our health and wellbeing assessment to focus on red flag symptoms for cancer and educating our clients on screening programmes to help reduce preventable deaths. Our new assessments will also focus on COPD symptoms and treatment compliance as we recognise this is a prevalent illness in our client group.



Adder initiatives

- Peer to peer naloxone
- Working with other agencies including the Police to encourage people with substance misuse problems into service eg VPRF
- Hospital liaison





withyou

