



Project
ADDER

Addiction, Diversion,
Disruption, Enforcement
and Recovery

Middlesbrough's ADDER-Enhanced Harm Reduction Approach

LJMU IMS User group event

Thursday 21st October 2021



...at a glance

- Approx. £4.5m over 2.5 years awarded to Middlesbrough
- High profile, national programme
- Creation of over 40 jobs in Middlesbrough
- Can share the learning/good practice across Cleveland
- Multi-faceted, in line with national drugs strategy:
 - Enforcement
 - Diversion
 - Treatment/Recovery

Project ADDER is funding our local, enhanced harm reduction approach including blended clinical and lived experience posts:

- **1 Lived Experience Outreach Worker**
 - **1 Harm Reduction Nurse**
 - **1 Overdose and Near miss practitioner**
 - **Plus further complementary roles**
-
- Partnership Approach to improve outcomes
 - Enhanced community settings, including our Safe Haven and Community Hubs, as delivery locations/community bases as service delivery gets back to normal.

Vending Machines

- Vending machines
 - Homeless Hub
 - Foundations medical practice
 - Potential police station – hoping naloxone will be distributed
 - Monitoring stats to highlight needle find hotspots to look for potential locations



Postal offer



Hostel Provision

- NSP Level 1 & 2 Practitioner trained
- Return rate prior to ADDER funding was between 9 – 30%, that equated to over 1000 needles missing each month
- Incentive scheme

Letitia house – 92-125% return rate

- Incentive scheme to be involved in community litter picks – challenging perceptions



Overdose and Near miss practitioner

- Targeting those clients who have had recent non fatal overdose
- Targeted approach
- Enhanced harm min interventions
- Linking in with hospitals, treatment services, harm reduction union and other local services for referrals
- Lived experience workers - linking in with police to attend drug related deaths to support any peers/family

Non Opiate

- NSP Level 1 & 2 Practitioner trained
- Local gym offering needle exchange – NSP Level 1 & 2 Practitioner trained
- Target gyms to offer targeted health approach – smoking, healthy eating, recreational drug use, steroid use etc.
- Non opiate harm min packs include equipment such as crack pipes (subject to Police agreement)

Outreach provision

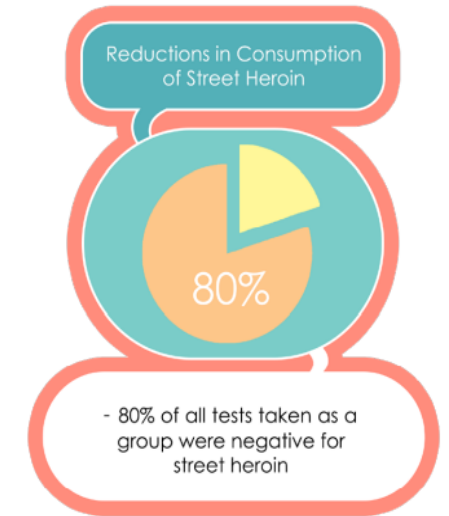
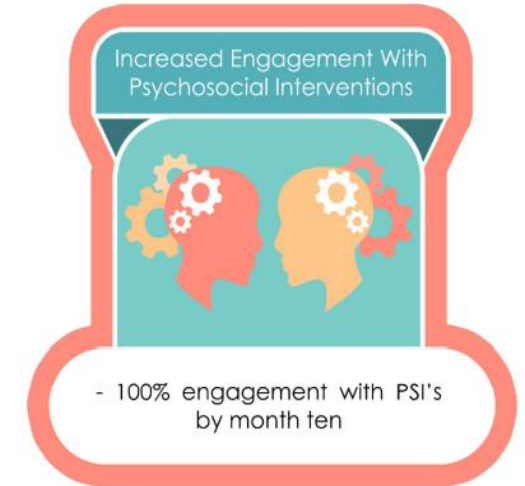
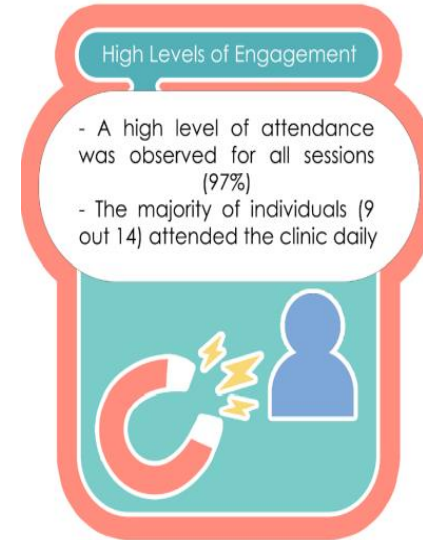
(carrying harm min equipment, offering harm reduction advice & Naloxone)

- Harm reduction union
- Homeless team
- Street wardens
- Streets ahead



Heroin Assisted Treatment

- Middleborough first in the UK to pilot
- Holistic approach
- Independently evaluated by academics
- Extended funding through ADDER



Naloxone

- Issues thousands of kits n Middlesbrough
- Multiple examples of kits been used to save lives.
- Trained 24 partner agencies and 139 staff
- Local prisons and hospitals distribute kits
- Peer to peer distribution via Harm Reduction Union.
- Cleveland police (frontline) will be carrying nasal kits and through ADDER staff in custody will distribute
- Vending machine in custody carrying naloxone



Hep C pathway

- Specialist nurse
- Intricate links to trust
- Community level – testing and referral
- Rapid access to clinical support from specialist
- Increase in testing due to roles within ADDER

KPI's

- Increased penetration rates in engagement of a 'difficult to engage' cohort
- Provision of clinical interventions for a cohort with significant unmet needs (i.e. unlikely to attend traditional offer)
- Reduction in demand for urgent and emergency care services (acting as a filter and triaging to appropriate support).
- Reduction in drug related litter
- Reduction of drug related deaths

Thanks, any questions?